

RACP 2008 Rural / Regional Seminar



Erana Gray

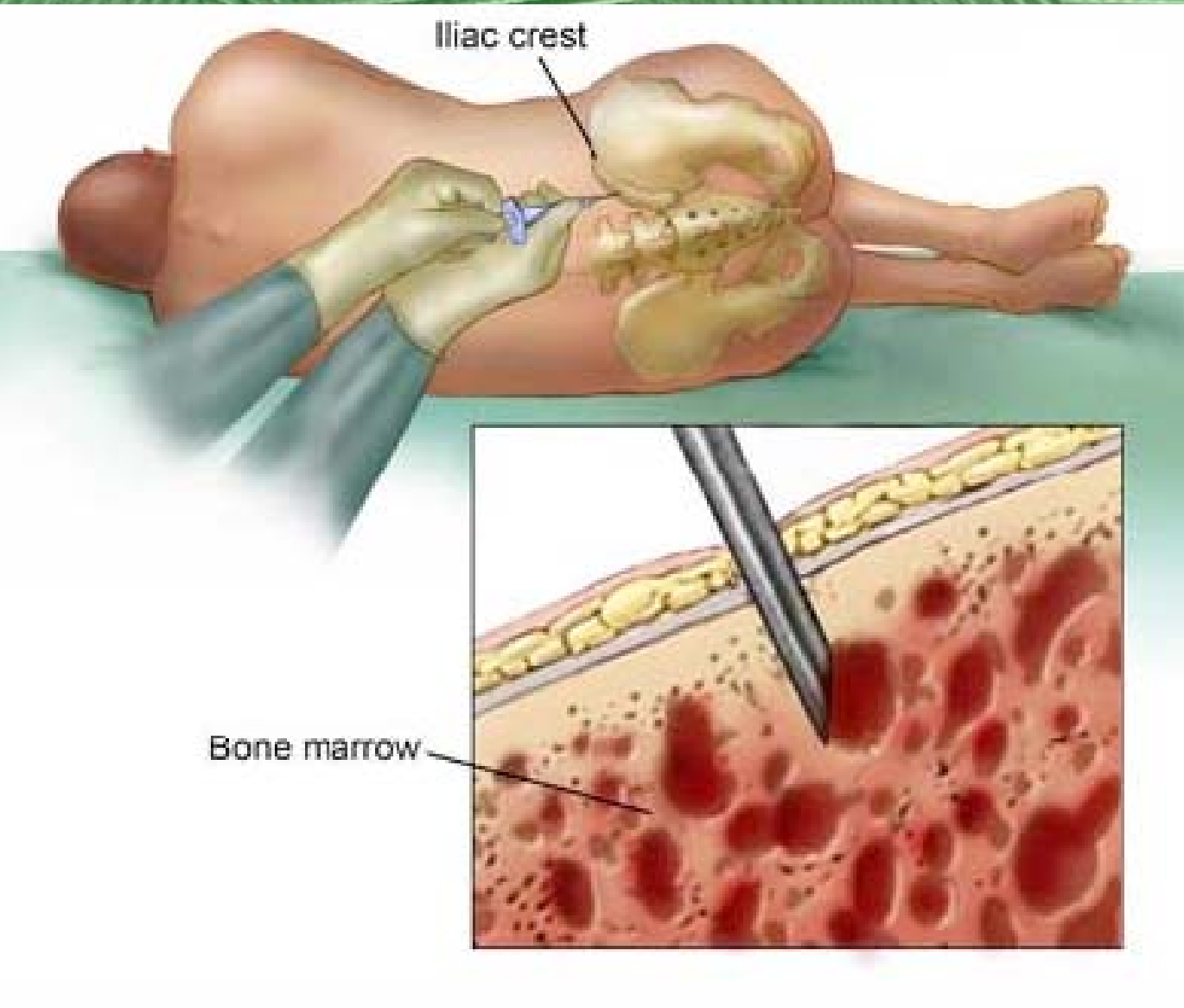
**Advanced Trainee
Infectious Diseases / General
Medicine**



Evaluating Job Options



- **Can't be sure until you've been there!**



"True" General Medicine



- *Interesting* with all the specialties included
- Good learning opportunities
- Broad pathology

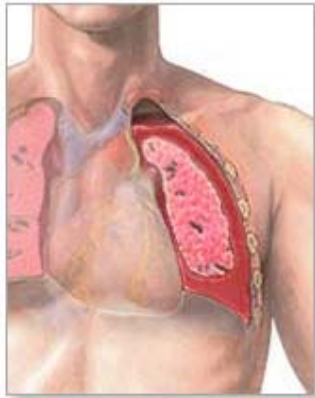


Service Design

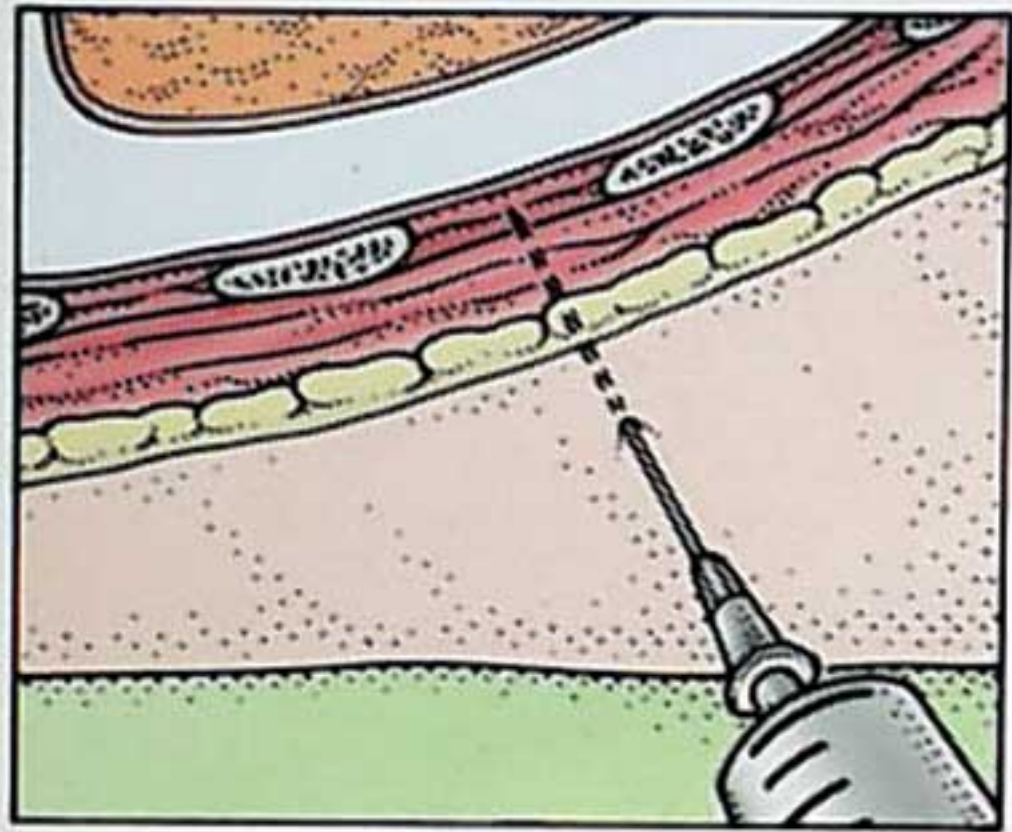
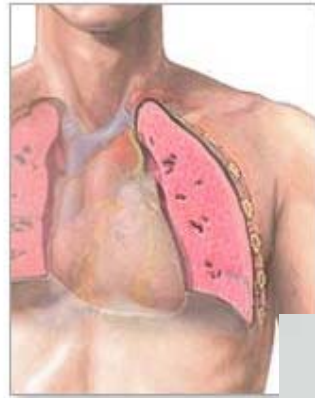


- It's all so much more visible
- Often no-one else to do it!

Before



After

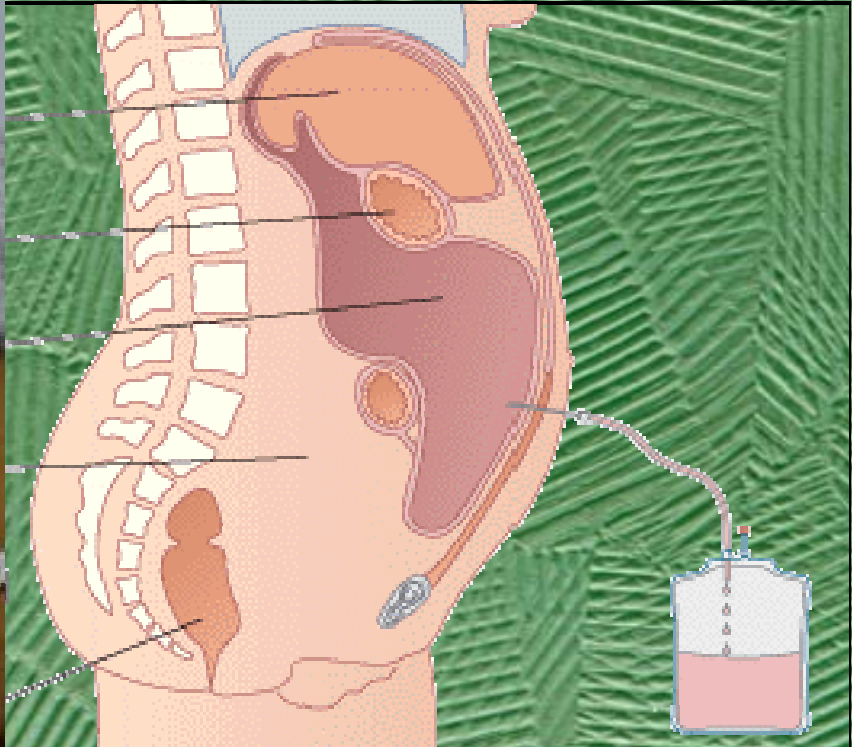




Examples ...



- Investigated a 'cluster outbreak' of new Rickettsia
- Guidelines' update: HIV; HBV
- Resistance levels *gonococcus*



Examples ...



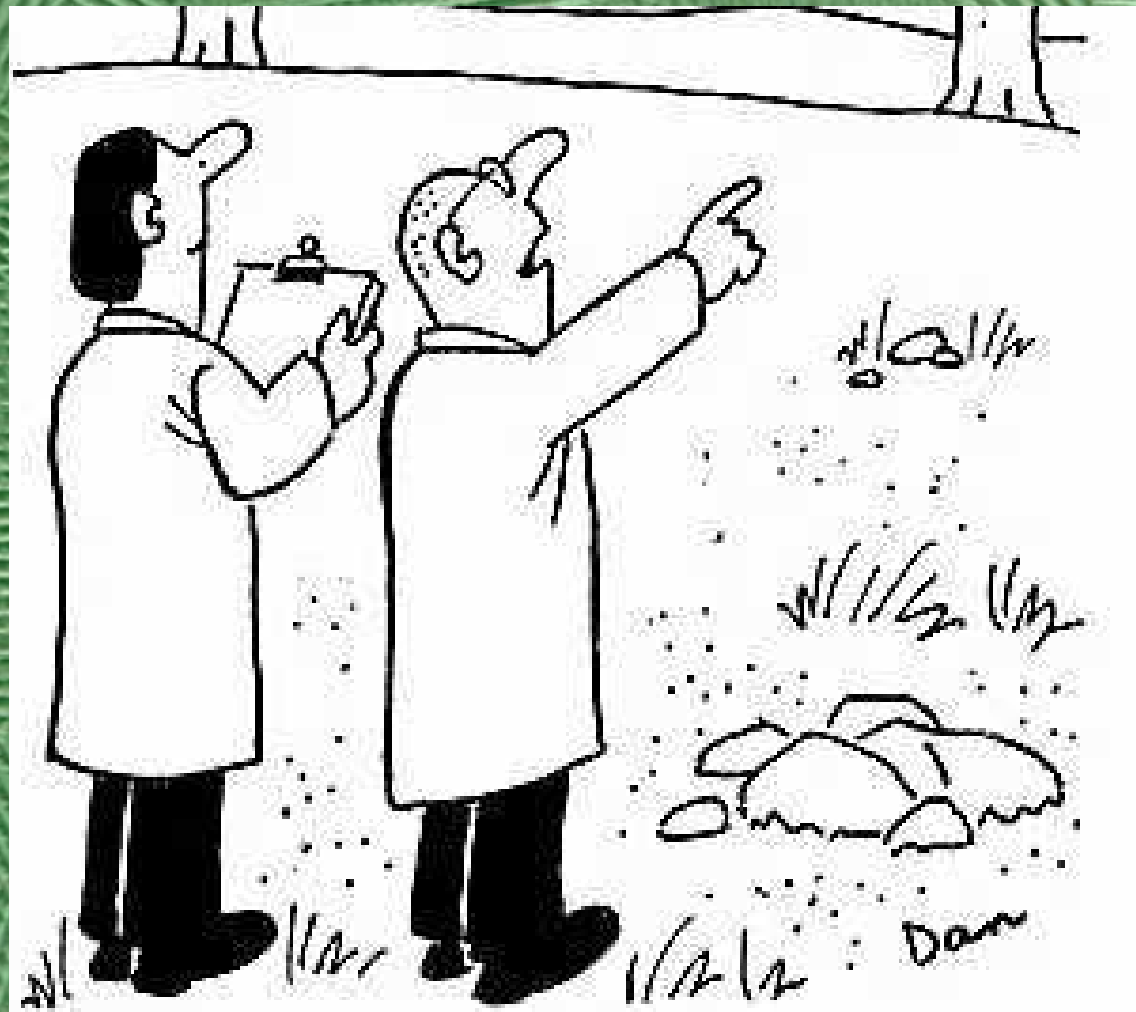
- **Worked too many night shifts**
- **Gone insane with staff shortages**
- **Gotten sick of being the most senior person on call ...**



other PROs and CONs



- Total care
- Procedures
- Closer working relationships
- Less tense?
- Negotiate job content
- Easier to get local things done
- Education: others
- Total care!
- More vacancies
- Less cover
- Harder to get out of town things done!
- Communication with specialties 'fraught'
- Transfers can be *slow*
- Education: own



'A high-rise block of flats would give many people a chance to enjoy a rural life...'